








## LEGENDA

# S·CAB

<b>AA</b>	Alluminio Anodizzato / Anodised aluminium
<b>AL</b>	Alluminio Lucidato / Polished aluminium
<b>AV</b>	Alluminio Verniciato / Coated aluminium
<b>BV</b>	Bronzo Vintage / Vintage bronze finish
<b>CR</b>	Cromato / Chromed
<b>IL</b>	Acciaio Inox Lucido / Polished stainless steel
<b>IS</b>	Acciaio Inox Satinato / Satin stainless steel
<b>KE</b>	Effetto Corten / Corten effect
<b>NB</b>	Nichel Matt / Nickel matt finish
<b>NL</b>	Nichel Nero Lucido / Black nickel glossy finish
<b>NO</b>	Nichel Nero Matt / Black nickel matt finish
<b>OS</b>	Effetto Ottone Satinato / Brass stain finish
<b>OM</b>	Oro Matt / Gold matt finish
<b>SP</b>	Verniciatura Speciale / Special coating
<b>VA</b>	Verniciato Antracite / Anthracite coated
<b>VB</b>	Verniciato Bianco / White coated
<b>VD</b>	Verniciato Verde Oliva / Olive green coated
<b>VE</b>	Verniciato Terracotta / Terracotta coated
<b>VF</b>	Verniciato Grafite / Graphite coated
<b>VL</b>	Verniciato Lino / Linen coated
<b>VM</b>	Verniciato Mattone / Brick red coated
<b>VN</b>	Verniciato Nero / Black coated
<b>VO</b>	Verniciato Avio / Air-force blue coated
<b>VR</b>	Verniciato Bronzo / Bronze coated
<b>VT</b>	Verniciato Tortora / Dove grey coated
<b>VV</b>	Verniciato Verde Tiglio / Willow green coated
<b>VY</b>	Verniciato Senape / Mustard yellow coated
<b>VZ</b>	Verniciato Azzurro / Light blue coated
<b>ZA</b>	Zincato e Verniciato Antracite / Zinc and anthracite coated
<b>ZB</b>	Zincato e Verniciato Bianco / Zinc and white coated
<b>ZE</b>	Zincato e Verniciato Terracotta / Zinc and terracotta coated
<b>ZL</b>	Zincato e Verniciato Lino / Zinc and linen coated
<b>ZN</b>	Zincato e Verniciato Nero / Zinc and black coated
<b>ZO</b>	Zincato e Verniciato Avio / Zinc and air-force blue coated
<b>ZP</b>	Zincato e Verniciato Rosa Antico / Zinc and antique pink coated
<b>ZT</b>	Zincato e Verniciato Tortora / Zinc and dove grey coated
<b>ZV</b>	Zincato e Verniciato Verde Oliva / Zinc and olive green coated
<b>ZY</b>	Zincato e Verniciato Senape / Zinc and mustard yellow coated
<b>F1</b>	Faggio Sbiancato per serie Chloé Mon Amour / Bleached beech for Chloé Mon Amour
<b>FA</b>	Faggio Laccato Acquamarina Opaco / Matt Aquamarine lacquered beech
<b>FB</b>	Faggio Tinto Nero / Black stained beech
<b>FG</b>	Faggio Laccato Grigio Opaco / Matt Grey lacquered beech
<b>FK</b>	Faggio Smoke / Smoke beech

<b>FN</b>	Faggio Naturale / Natural beech
<b>FS</b>	Faggio Sbiancato / Bleached beech
<b>FW</b>	Faggio Wengé / Wenge beech
<b>HB</b>	Frassino Tinto Nero a poro aperto / Black stained ash with visible grains
<b>HN</b>	Frassino Tinto Noce Biondo / Blond stained ash
<b>HS</b>	Frassino Sbiancato / Bleached ash
<b>HW</b>	Frassino Tinto Bianco / White stained ash
<b>MS</b>	Mogano Sapelli / Sapelli mahogany
<b>NC</b>	Noce Canaletto / Canaletto walnut
<b>NR</b>	Rovere Nero / Black stained oak
<b>RN</b>	Rovere Naturale / Natural oak
<b>HPL</b>	Stratificato Compact / Compact laminate
<b>TP</b>	Tecnopolimero / Technopolymer
<b>OF</b>	Versione Office / Office Version
<b>FX</b>	Piedino Fisso / Fixed foot
<b>RG</b>	Piedino Regolabile / Adjustable foot
<b>AY</b>	Finiture tessuti per imbottiti / Fabric details for upholstered items
<b>CNY</b>	Finiture tessuti per imbottiti / Fabric details for upholstered items
<b>EPX</b>	Finiture tessuti per imbottiti / Fabric details for upholstered items
<b>EPY</b>	Finiture tessuti per imbottiti / Fabric details for upholstered items
<b>KY</b>	Finiture tessuti per imbottiti / Fabric details for upholstered items
<b>MX</b>	Finiture tessuti per imbottiti / Fabric details for upholstered items
<b>MY</b>	Finiture tessuti per imbottiti / Fabric details for upholstered items
<b>TC</b>	Tessuto cliente / Com - customer own material
<b>TX</b>	Finiture tessuti per imbottiti / Fabric details for upholstered items
<b>TY</b>	Finiture tessuti per imbottiti / Fabric details for upholstered items
<b>T4X</b>	Finiture tessuti per imbottiti / Fabric details for upholstered items
<b>T4Y</b>	Finiture tessuti per imbottiti / Fabric details for upholstered items
<b>V3X</b>	Finiture tessuti per imbottiti / Fabric details for upholstered items
<b>V3Y</b>	Finiture tessuti per imbottiti / Fabric details for upholstered items
<b>V4X</b>	Finiture tessuti per imbottiti / Fabric details for upholstered items
<b>V4Y</b>	Finiture tessuti per imbottiti / Fabric details for upholstered items
<b>V5X</b>	Finiture tessuti per imbottiti / Fabric details for upholstered items
<b>WFY</b>	Finiture tessuti per imbottiti / Fabric details for upholstered items
<b>WPX</b>	Finiture tessuti per imbottiti / Fabric details for upholstered items
<b>N...</b>	Corda nautica per Lisa Filò / Nautical rope for Lisa Filò
<b>P...</b>	Corda in estruso di PVC per Lisa Club / Woven extruded PVC for Lisa Club
<b>IG</b>	I prodotti con dicitura IG sono prodotti ignifughi testati CATAS per la reazione al fuoco secondo la norma UNI 9177 e forniti di regolare certificato di omologazione al fuoco rilasciato dal Ministero dell'Interno / Products labelled IG are CATAS tested fire-retardant products according to UNI 9177 standard, supplied with the standard fire type-approval certification issued by the Ministry of Interior.

**POLYCARBONATE**  
policarbonato

	<b>100</b> transparent <i>trasparente</i>		<b>130</b> transparent orange <i>trasparente arancio</i>		<b>140</b> transparent red <i>trasparente rosso</i>		<b>183</b> transparent smoked <i>trasparente fumé</i>
	<b>340</b> glossy red <i>rosso pieno</i>		<b>315</b> glossy dove grey <i>tortora pieno</i>		<b>310</b> glossy white <i>bianco pieno</i>		<b>380</b> glossy black <i>nero pieno</i>

**OVERMOULDED  
TECHNOPOLYMER**  
tecnopolimero  
co-stampato

	<b>201</b> transparent + linen <i>trasparente + lino</i>		<b>202</b> transparent + sand <i>trasparente + sabbia</i>		<b>206</b> transparent + red <i>trasparente + rosso</i>		<b>209</b> transparent + anthracite grey / <i>trasparente + antracite</i>
---	--	---	---	--	---	---	---

**TECHNOPOLYMER**  
tecnopolimero

	<b>10</b> white <i>bianco</i>		<b>11</b> linen <i>lino</i>		<b>15</b> dove grey <i>tortora</i>		<b>81</b> anthracite grey <i>antracite</i>
	<b>86</b> graphite <i>grafite</i>		<b>82</b> light grey <i>grigio chiaro</i>		<b>30</b> orange <i>arancio</i>		<b>40</b> red <i>rosso</i>
	<b>42</b> geranium red <i>rosso geranio</i>		<b>20</b> yellow <i>giallo</i>		<b>22</b> mustard yellow <i>senape</i>		<b>51</b> light green <i>verde pistacchio</i>
	<b>56</b> olive green <i>verde oliva</i>		<b>62</b> light blue <i>azzurro</i>		<b>63</b> air-force blue <i>avio</i>		<b>61</b> cornflower blue <i>fiordaliso</i>
	<b>60</b> blue <i>blu</i>		<b>73</b> terracotta <i>terracotta</i>		<b>72</b> cocoa <i>cacao</i>		<b>70</b> bronze <i>bronzo</i>
	<b>80</b> black <i>nero</i>		<b>222</b> white - dove grey <i>bianco - tortora</i>		<b>211</b> white - orange <i>bianco - arancio</i>		<b>212</b> white - red <i>bianco - rosso</i>
	<b>221</b> white - light green <i>bianco - verde pistacchio</i>		<b>213</b> white - cornflower blue <i>bianco - fiordaliso</i>		<b>214</b> white - anthracite grey <i>bianco - antracite</i>		

**STEEL AND STAINLESS STEEL**  
acciaio e acciaio inox



**OS**  
satin brass effect steel / acciaio effetto ottone satinato



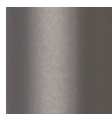
**OM**  
matt gold finish steel / acciaio finitura oro opaco



**BV**  
vintage bronze finish steel / acciaio finitura bronzo vintage



**NL**  
black glossy nickel finish steel / acciaio finitura nichel nero lucido



**NO**  
black matt nickel finish steel / acciaio finitura nichel nero opaco



**NB**  
matt nickel finish steel / acciaio finitura nichel opaco



**CR**  
chromed steel / acciaio cromato



**IS**  
satin stainless steel / acciaio inox satinato



**IL**  
polished stainless steel / acciaio inox lucido



**VB**  
matt white coated steel, smooth finish / acciaio verniciato bianco opaco, finitura liscia



**VL**  
matt linen coated steel, embossed finish / acciaio verniciato lino opaco, finitura gofrata



**VT**  
matt dove grey coated steel, embossed finish / acciaio verniciato tortora opaco, finitura gofrata



**VR**  
bronze coated steel, embossed finish / acciaio verniciato bronzo, finitura gofrata



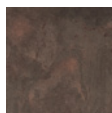
**VF**  
matt graphite coated steel, embossed finish / acciaio verniciato grafite opaco, finitura gofrata



**VA**  
matt anthracite grey coated steel, embossed finish / acciaio verniciato antracite opaco, finitura gofrata



**VN**  
matt black coated steel, embossed finish / acciaio verniciato nero opaco, finitura gofrata



**KE**  
corten effect steel / acciaio effetto corten



**VY**  
matt mustard yellow coated steel, embossed finish / acciaio verniciato senape opaco, finitura gofrata



**VE**  
matt terracotta coated steel, embossed finish / acciaio verniciato terracotta opaco, finitura gofrata



**VD**  
matt olive green coated steel, embossed finish / acciaio verniciato verde oliva opaco, finitura gofrata



**VO**  
matt air-force blue coated steel, embossed finish / acciaio verniciato avio opaco, finitura gofrata

**ALUMINIUM**  
alluminio



**AA**  
anodised aluminium / alluminio anodizzato



**AL**  
polished aluminium / alluminio lucidato



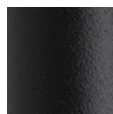
**AV 10**  
matt white coated aluminium, embossed finish / alluminio verniciato bianco opaco, finitura gofrata



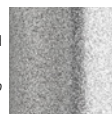
**AV 15**  
matt dove grey coated aluminium, embossed finish / alluminio verniciato tortora opaco, finitura gofrata



**AV 70**  
matt bronze coated aluminium, embossed finish / alluminio verniciato bronzo opaco, finitura gofrata



**AV 81**  
matt anthracite grey coated aluminium, embossed finish / alluminio verniciato antracite opaco, finitura gofrata



**AV 84**  
silver coated aluminium, polished finish / alluminio verniciato argento, finitura lucida

**ZINC AND POWDER COATED STEEL**  
INDOOR/OUTDOOR USE  
acciaio zincato e verniciato per interno/esterno



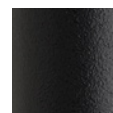
**ZB**  
zinc and matt white coated steel, embossed finish / acciaio zincato e verniciato bianco opaco, finitura gofrata



**ZL**  
zinc and matt linen coated steel, embossed finish / acciaio zincato e verniciato lino opaco, finitura gofrata



**ZT**  
zinc and matt dove grey coated steel, embossed finish / acciaio zincato e verniciato tortora opaco, finitura gofrata



**ZA**  
zinc and matt anthracite grey coated steel, embossed finish / acciaio zincato e verniciato antracite opaco, finitura gofrata



**ZY**  
zinc and matt yellow coated steel, embossed finish / acciaio zincato e verniciato senape opaco, finitura gofrata



**ZE**  
zinc and matt terracotta coated steel, embossed finish / acciaio zincato e verniciato terracotta opaco, finitura gofrata



**ZO**  
zinc and matt air-force blue coated steel, embossed finish / acciaio zincato e verniciato avio opaco, finitura gofrata



**ZP**  
zinc and matt antique pink coated steel, embossed finish / acciaio zincato e verniciato rosa antico opaco, finitura gofrata



**ZV**  
zinc and matt olive green coated steel, embossed finish / acciaio zincato e verniciato verde oliva opaco, finitura gofrata



**ZN**  
zinc and matt black coated steel, embossed finish / acciaio zincato e verniciato nero opaco, finitura gofrata

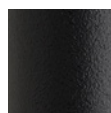
**SUMMER AND  
LEO FINISHES  
ZINC COATED STEEL  
INDOOR/OUTDOOR USE**  
finiture Summer e Leo  
acciaio zincato e verniciato  
per interno/esterno



**VB**  
zinc and matt white  
coated steel, embossed  
finish / *acciaio zincato e  
verniciato bianco opaco,  
finitura gofrata*



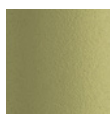
**VT**  
zinc and matt dove grey  
coated steel, embossed  
finish / *acciaio zincato e  
verniciato tortora opaco,  
finitura gofrata*



**VA**  
zinc and matt  
anthracite grey coated  
steel, embossed finish  
/ *acciaio zincato e  
verniciato antracite  
opaco, finitura gofrata*



**VM**  
zinc and matt brick red  
coated steel, embossed  
finish / *acciaio zincato e  
verniciato mattone opaco,  
finitura gofrata*



**VV**  
zinc and matt willow green  
coated steel, embossed  
finish / *acciaio zincato e  
verniciato verde tiglio  
opaco, finitura gofrata*



**VZ**  
zinc and matt light blue  
coated steel, embossed  
finish / *acciaio zincato e  
verniciato azzurro opaco,  
finitura gofrata*

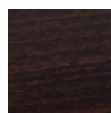
**WOOD**  
legno



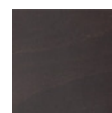
**FN - 500**  
natural beech  
*faggio naturale*



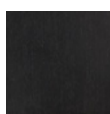
**F1 - FS - 501**  
bleached beech  
*faggio sbiancato*



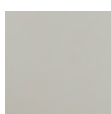
**FW - 502**  
wenge stained beech  
*faggio tinto wengé*



**FK - 503**  
smoke beech  
*faggio smoke*



**FB**  
black stained beech  
*faggio tinto nero*



**FG - 504**  
grey matt lacquered  
beech / *faggio laccato  
grigio opaco*



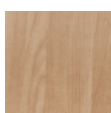
**FA**  
aquamarine matt  
lacquered beech  
*faggio laccato  
acquamarina opaco*



**HS**  
bleached ash  
*frassino sbiancato*



**HW**  
white stained ash  
*frassino tinto bianco*



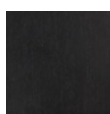
**HN**  
blonde walnut stained  
ash / *frassino tinto  
noce biondo*



**HB**  
black stained ash with  
visible grains / *frassino  
tinto nero a poro aperto*



**RN**  
natural oak  
*rovere naturale*



**NR**  
black stained oak  
*rovere tinto nero*



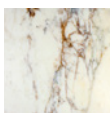
**NC**  
Canaletto walnut  
*noce canaletto*



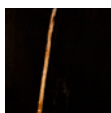
**MS**  
Sapelli mahogany  
*mogano sapelli*

TABLE TOP FINISHES / finiture piani tavoli

**MARBLE**  
marmo



**451**  
Calacatta

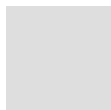


**452**  
Sahara Noir  
with protective varnish in clear glossy polyester  
*con verniciatura protettiva in poliestere trasparente lucido*

**COMPACT LAMINATE**  
stratificato compact



**10**  
white  
*bianco*



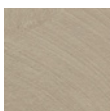
**82**  
light grey  
*grigio chiaro*



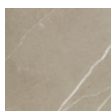
**81**  
anthracite  
*antracite*



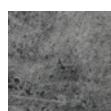
**15**  
dove grey  
*tortora*



**92**  
dove-grey spatula effect / *effetto spatolato tortora*



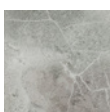
**93**  
piacentina stone effect / *effetto pietra piacentina*



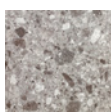
**87**  
concrete effect  
*effetto cemento*



**94**  
slate effect  
*effetto ardesia*



**90**  
stone effect  
*effetto pietra*



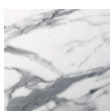
**91**  
grit effect  
*effetto graniglia*



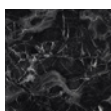
**570**  
dove grey oak  
*rovere tortora*



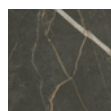
**571**  
beaver oak  
*rovere castoro*



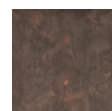
**572**  
Carrara marble effect  
*effetto marmo Carrara*



**574**  
black marble effect  
*effetto marmo nero Impero*



**575**  
black Sahara marble effect / *effetto marmo nero Sahara*



**573**  
corten effect  
*effetto corten*



**95 FENIX**  
opaque surface, anti-fingerprint and soft touch  
*superficie opaca, anti-impronta e soft touch*

**ZINC AND POWDER COATED STEEL TOPS**  
piani acciaio zincato e verniciato a polvere



**10 - ZB**  
white  
*bianco*



**ZT**  
dove grey  
*tortora*



**81 - ZA**  
anthracite  
*antracite*



**ZE**  
terracotta  
*terracotta*



**ZO**  
air-force blue  
*avio*



**ZV**  
olive green  
*verde oliva*



**ZN**  
black  
*nero*

**TEMPERED GLASS**  
vetro temperato



**412**  
white lacquered  
*laccato bianco*



**401**  
smoked grey  
*grigio fumé*



**413**  
screen printed  
*serigrafato*

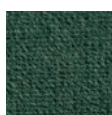


**410**  
wave pattern  
*deco wave*

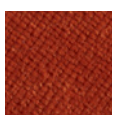
**VELVET**

velluto

\* = minimum order quantity and delivery times to be verified  
*quantitativo minimo e tempi di consegna da concordare*



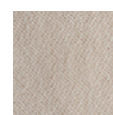
**V3 57**



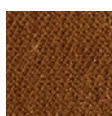
**V3 58**



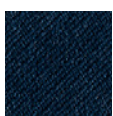
**V3 59**



**V3 60\***



**V3 62\***



**V3 63\***



**V3 64\***



**V3 66\***



**VELVET**

velluto

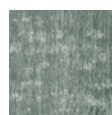
WATER-REPELLENT  
 idrorepellente



**V5 A6**



**V5 A7**



**V5 A8**



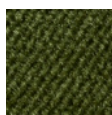
**V5 A9**



**V5 B0**

WATER-REPELLENT  
 idrorepellente

\* = minimum order quantity and delivery times to be verified  
*quantitativo minimo e tempi di consegna da concordare*



**V4 38**



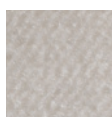
**V4 39**



**V4 40**



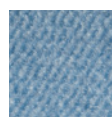
**V4 44**



**V4 45\***



**V4 46\***



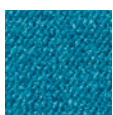
**V4 47**



**V4 48\***



**V4 49\***

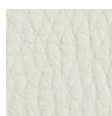


**V4 50**

**SIMIL-LEATHER**

similpelle

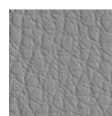
\* = minimum order quantity and delivery times to be verified  
*quantitativo minimo e tempi di consegna da concordare*



**EP 67\***



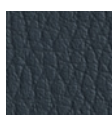
**EP 68\***



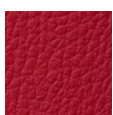
**EP 69\***



**EP 70**



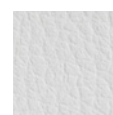
**EP 71\***



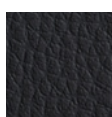
**EP 72\***



**EP 73**



**EP 74\***



**EP 75**



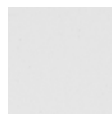


**NATURAL LEATHER**  
cuoio naturale

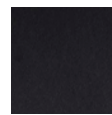
\* = minimum order quantity and delivery times to be verified  
*quantitativo minimo e tempi di consegna da concordare*



**CN 82\***



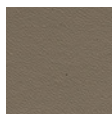
**CN 83\***



**CN 84\***



**CN A1\***

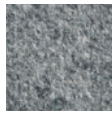


**CN A2\***

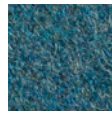


**WOOL**  
lana

\* = minimum order quantity and delivery times to be verified  
*quantitativo minimo e tempi di consegna da concordare*



**WF 95\***



**WF 96\***



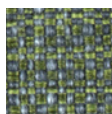
**WF 97\***



**WF 98\***



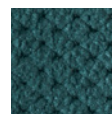
**FABRIC**  
tessuto



**T5 26**

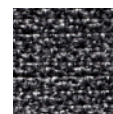


**T5 27**

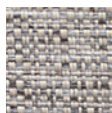


**M2 09**

WATER-REPELLENT  
idrorepellente



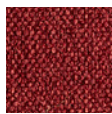
**T3 25**



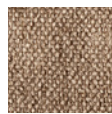
**T6 28**



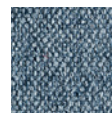
**WATER-REPELLENT**  
idrorepellente



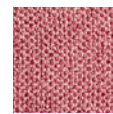
**T9 78**



**T9 79**



**T9 80**



**T9 85**

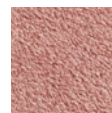
\* = minimum order quantity and delivery times to be verified  
*quantitativo minimo e tempi di consegna da concordare*



**M1 05**



**M1 16\***



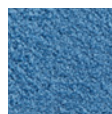
**M1 17\***



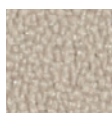
**M1 18\***



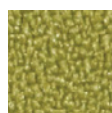
**M1 19\***



**M1 20\***



**T4 51**



**T4 53\***



**T4 55**



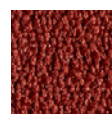
**T4 56\***



**T4 A3\***



**T4 A4\***



**T4 A5\***



STAIN RESISTANT  
antimacchia

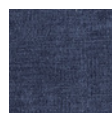
\* = minimum order  
quantity and delivery  
times to be verified  
*quantitativo minimo e  
tempi di consegna da  
concordare*



**T8 06\***

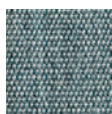


**T8 07\***



**T8 08\***

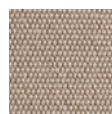
WATERPROOF ACRYLIC  
acrilico waterproof



**WP 86**



**WP 87**



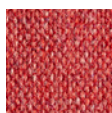
**WP 88**



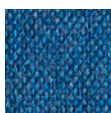
**WP 89**

FABRIC  
tessuto

\* = minimum order  
quantity and delivery  
times to be verified  
*quantitativo minimo e  
tempi di consegna da  
concordare*



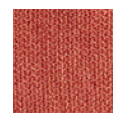
**K1 90\***



**K1 99\***



**K1 00\***



**K2 04\***



CUSTOMER OWN FABRIC  
tessuto cliente

\* = minimum order 20  
pieces, feasibility to be  
verified / *minimo ordine  
20 pezzi, fattibilità da  
verificare*



**TC**

## FABRICS FOR FIXED AND MOBILE CUSHIONS / tessuti per cuscini fissi e da appoggio

FABRIC  
tessuto



**07**



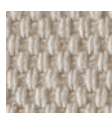
**25**



**32**

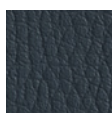


PANAMA COTTON  
cotone panama

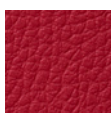


**21**

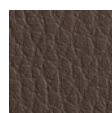
SIMIL-LEATHER  
similpelle



**71**



**72**



**73**



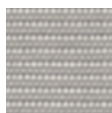


**FABRICS FOR OUTDOOR CUSHIONS FOR LISA SWING - LOUNGE - SOFA** / tessuto cuscini outdoor per Lisa Swing / Lounge / Sofa

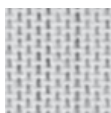
---

**sunbrella®**

WATER-REPELLENT  
STAIN RESISTANT  
idrorepellente  
antimacchia



S1 **B5**



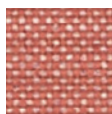
S1 **B6**



S1 **B8**



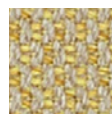
S1 **B7**



S2 **B9**



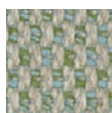
S3 **C0**



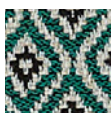
S4 **C1**



S4 **C2**



S4 **C3**



S5 **C4**

**FABRICS FOR OUTDOOR CUSHIONS FOR SI-SI / SI-SI BARCODE / SI-SI DOTS** / tessuto cuscini outdoor per Si-Si / Si-Si Barcode / Si-Si Dots

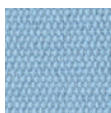
---

**ACRYLIC DRALON®**  
acrilico Dralon®

WATER-REPELLENT  
idrorepellente



**B1**



**B2**



**B3**



**B4**

**FABRICS FOR OUTDOOR CUSHIONS FOR SUMMER CHAIR AND ARMCHAIR** / tessuto cuscini outdoor per sedia e poltrona Summer

---

**ACRYLIC**  
acrilico

WATER-REPELLENT  
STAIN RESISTANT  
idrorepellente  
antimacchia



**10**

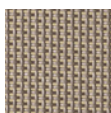
## OTHER FABRICS / altri tessuti

**SYNTHETIC FABRIC,  
BREATHABLE,  
WATER-REPELLENT**  
tessuto sintetico  
traspirante idrorepellente



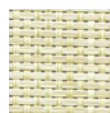
**T10**

white  
*bianco*



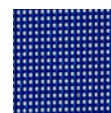
**T15**

dove grey  
*tortora*



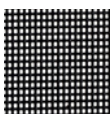
**T16**

honey  
*miele*



**T60**

blue  
*blue*



**T81**

anthracite  
*antracite*

**NAUTICAL ROPE**  
corda nautica

100% recyclable polyester,  
dope-dyed, non-toxic,  
resistant and easy to  
maintain.

*100% poliester riciclabile,  
tinto in pasta, atossico,  
resistente e di facile  
manutenzione.*



**N84**

silver  
*argento*



**N57**

mint  
*menta*



**N81**

anthracite  
*antracite*



**N80**

black  
*nero*



**N15**

dove grey  
*tortora*



**N30**

orange  
*arancio*

**WOVEN EXTRUDED PVC  
WITH NYLON WIRES**  
corda in estruso di PVC  
con anime in nylon



**P10**

white  
*bianco*



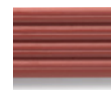
**P86**

graphite  
*grafite*



**P74**

biscuit  
*biscotto*



**P73**

terracotta  
*terracotta*